



SOLARWORLD ENERGY SOLUTIONS LIMITED

(Formerly known as Solarworld Energy Solutions Pvt. Ltd.)

May 26, 2026

To,
BSE Limited
Phiroze Jeejeebhoy Towers,
Dalal Street,
Mumbai – 400001
Scrip Code: 544532

To,
National Stock Exchange of India Limited
Exchange Plaza, Plot no. C/1, G Block,
Bandra-Kurla Complex
Bandra (E), Mumbai - 400051
Symbol: SOLARWORLD

Sub: Intimation of Investor Presentation for the quarter and financial year ended March 31, 2026

Pursuant to Regulation 30 of the Securities and Exchange Board of India (Listing Obligations and Disclosure Requirements) Regulations, 2015, as amended, please find enclosed herewith the Investor Presentation for the Audited (Standalone and Consolidated) Financial Results for the quarter and financial year ended March 31, 2026.

This is for your information and records.

Thanking you.

Yours faithfully,
For Solarworld Energy Solutions Limited
(Formerly known as Solarworld Energy Solutions Private Limited)

Varsha Bharti
Company Secretary and Compliance Officer
Membership No.: A37545

Encl.: A/a



Solarworld
Energy Solutions Ltd

Solarworld Energy Solutions Limited

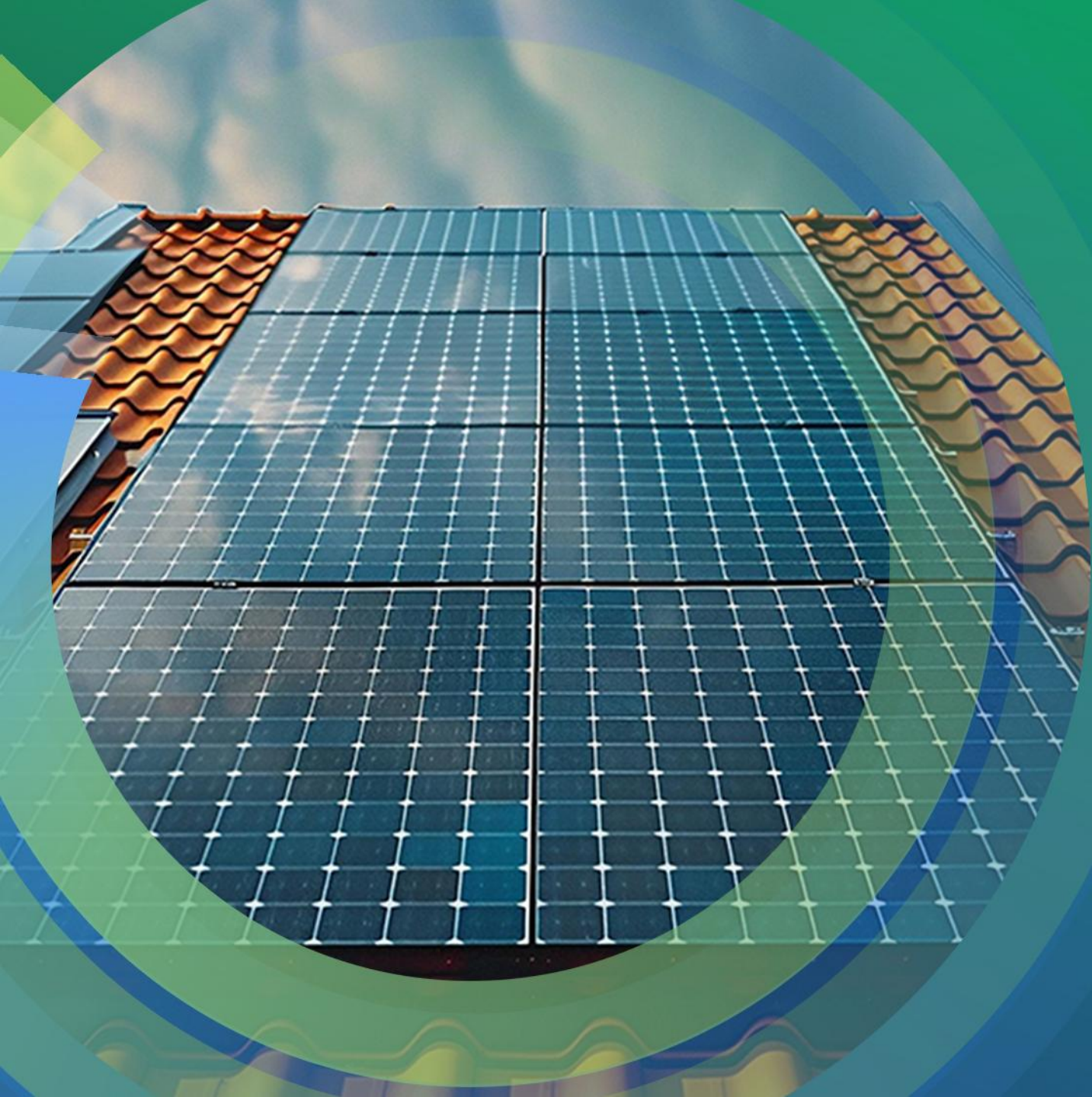
Investor Presentation | Q4FY26



This presentation and the accompanying slides (the “Presentation”), which have been prepared by Solarworld Energy Solutions Ltd (the “Company”), have been prepared solely for information purposes and do not constitute any offer, recommendation or invitation to purchase or subscribe for any securities, and shall not form the basis or be relied on in connection with any contract or binding commitment whatsoever. No offering of securities of the Company will be made except by means of a statutory offering document containing detailed information about the Company.

This Presentation has been prepared by the Company based on information and data which the Company considers reliable, but the Company makes no representation or warranty, express or implied, whatsoever, and no reliance shall be placed on, the truth, accuracy, completeness, fairness and reasonableness of the contents of this Presentation. This Presentation may not be all inclusive and may not contain all of the information that you may consider material. Any liability in respect of the contents of, or any omission from, this Presentation is expressly excluded.

Certain matters discussed in this Presentation may contain statements regarding the Company’s market opportunity and business prospects that are individually and collectively forward-looking statements. Such forward-looking statements are not guarantees of future performance and are subject to known and unknown risks, uncertainties and assumptions that are difficult to predict. These risks and uncertainties include, but are not limited to, the performance of the Indian economy and of the economies of various international markets, the performance of the industry in India and world-wide, competition, the company’s ability to successfully implement its strategy, the Company’s future levels of growth and expansion, technological implementation, changes and advancements, changes in revenue, income or cash flows, the Company’s market preferences and its exposure to market risks, as well as other risks. The Company’s actual results, levels of activity, performance or achievements could differ materially and adversely from results expressed in or implied by this Presentation. The Company assumes no obligation to update any forward-looking information contained in this Presentation. Any forward-looking statements and projections made by third parties included in this Presentation are not adopted by the Company and the Company is not responsible for such third-party statements and projections.



Q4 & FY26 Key Highlights

Performance Delivered: Q4 & FY26



Q4 FY26

6,069.5 Mn

Total Income

239%
YoY Growth

732.8 Mn

EBITDA

12.1% Margin

347%
YoY Growth

490.6 Mn

PAT

8.1% Margin

420%
YoY Growth

FY26

14,160.7 Mn

Total Income

157%
YoY Growth

1,879.34 Mn

EBITDA

13.3% EBITDA Margin

63%
YoY Growth

1,204.7 Mn

PAT

8.5% PAT Margin

56%
YoY Growth

At a glance



16,742 Mn

Solar EPC and O&M
for ongoing projects



11,389 Mn

Including EPC for BESS IPP projects



348 MW/DC

EPC Portfolio Installed till Date



60+

Total Number of Projects



1.552 GW

TopCon Solar Module Line



3.4 GW

BESS Line
Trial Underway



1.2 GW

TopCon Solar Cell Line
Under Execution
Expected by June 2027



5GW

Junction box
Trial Underway



13+ yrs

Experience



400+

Employee Strength



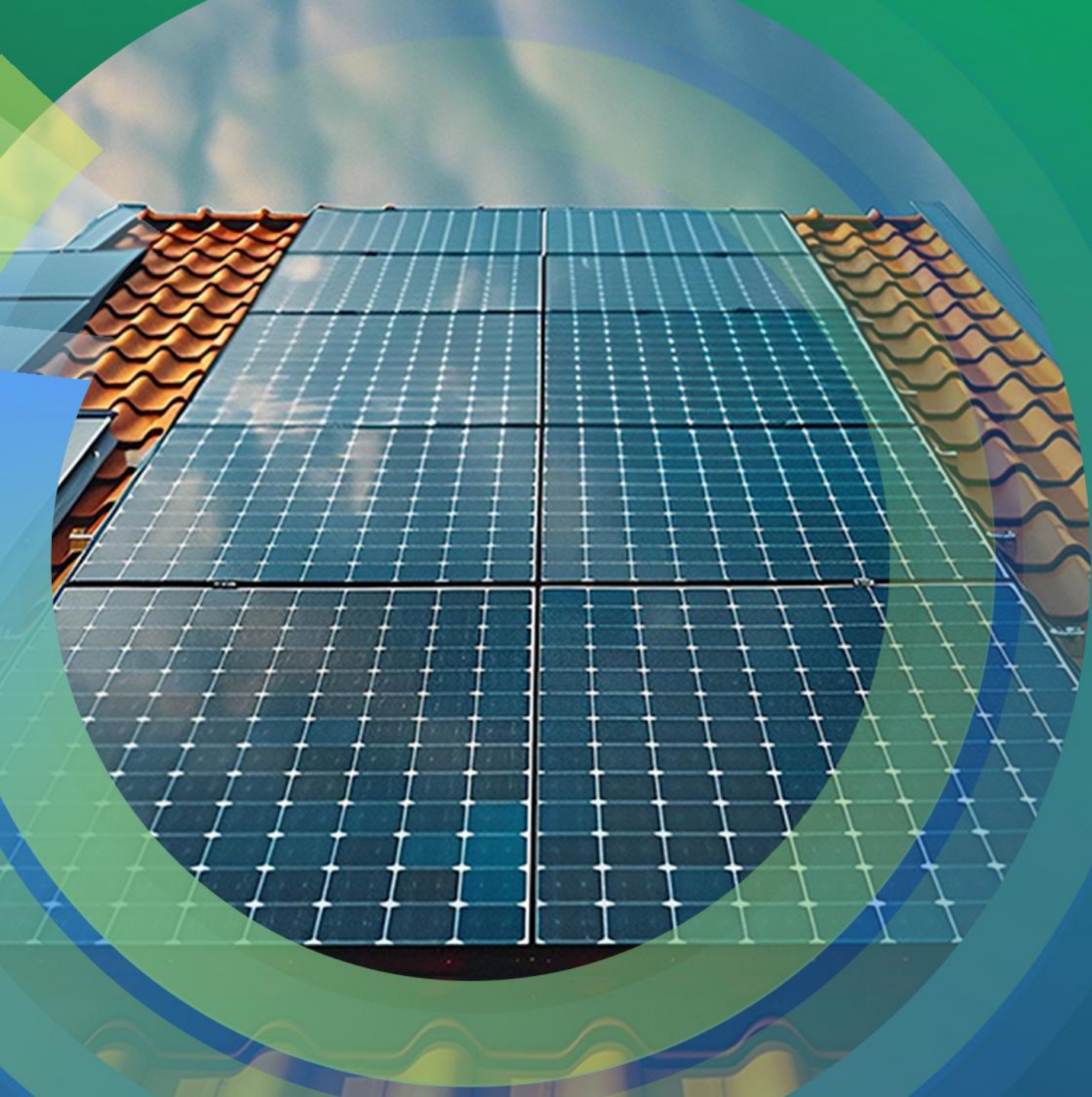
Top 3

In EPC segment profitability wise



Crisil A-

Long Term
Credit Rating by CRISIL



Company Overview

Solutions Offered Through Two Distinct Models

CAPEX Model

End-to end Solutions on a Turn-key Basis Ownership of the project vests with the customer itself

Under the CAPEX model, we provide end-to-end solutions by designing, installing, setting up and commissioning the solar power projects on a turn-key basis for our customers, while the ownership of the solar power projects vests with the customer itself.

RESCO Model

(Renewable Energy Service Company)

No capital investment required by power purchaser

Under the RESCO model, the investment includes land acquisition, equipment procurement and installation, and obtaining necessary regulatory and statutory approvals from local authorities.

Our Portfolio

47 / 13
Completed / Ongoing
projects

**264 MW AC/
348 MW DC**
Total Capacity of Completed
Projects

**1405 MW / AC
1809 MW / DC**
Ongoing Projects
Capacity for EPC

**582 MW/
1184 MWh**
Ongoing Projects
Capacity for BESS

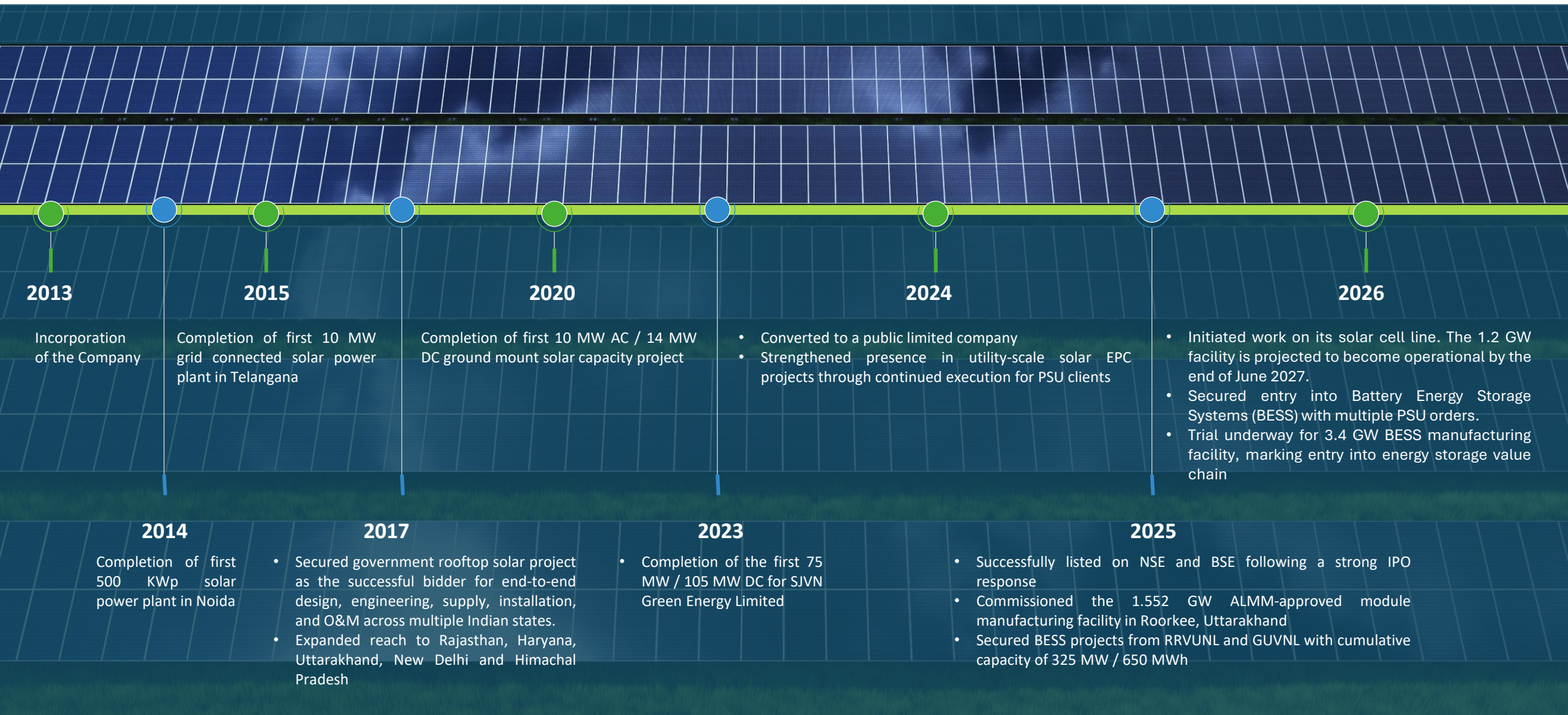
Major order wins for Q4 FY26 include

- BESS EPC Implementation at NTPC Thermal power station at Solapur (Maharashtra) 1- 132 MW/ 264 MWh- **INR 3,142.69 Mn** (including O&M).
- BESS EPC Implementation at NTPC Thermal Power Station at Solapur (Maharashtra) -75 MW/150 MWh- **INR 1,769.17 Mn** (including O&M).
- BESS EPC Implementation at NTPC Thermal Power Station at Unchahar-U.P -50 MW/100 MWh-**INR 1,082.27 Mn** (including O&M).
- BOS Package for Development of 200 MW AC/260 MW DC Grid Connected Solar PV project from NTPC Renewable Energy Limited of **INR 2,347.17 Mn** (Including O&M)

Manufacturing Plants Update

- The **1.552 GW** module manufacturing facility is spread across 7.5-acres in Roorkee, Uttarakhand, features fully automated ATW and Horad lines commissioned in July 2025, producing high-efficiency TOPCon panels (610–750 W) across M10R, G12R, and G12 configurations. It meets stringent quality standards with BIS, IEC, and ALMM certifications, and is compliant with ISO 9001:2015 and ISO 14001:2015/2018.
- **3.4 GW** fully automated BESS facility with KUKA robotics is ready, with trials underway.
- **5 GW** Junction Box line is being established through a joint venture, with site ready for installation and trials underway.
- **1.2 GW** solar cell facility under development, with commercial operations targeted by June 2027

Milestones that define our Growth Story



Successful IPO Listing

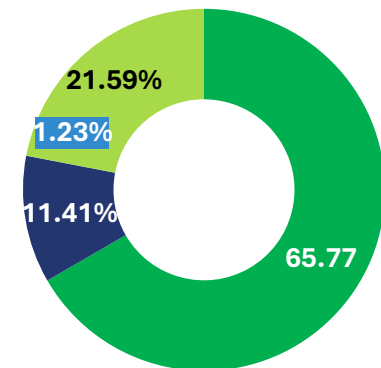
Overwhelming subscription of **68.5 times**

Shareholding Pattern
As on 31st March 2026 (Post Issue)



September 2025

- **Listing done on BSE & NSE**
- **IPO Price:** ₹ 351 per share
- **Listing Price:** NSE ₹ 388.50 per share BSE ₹ 389.00 per share
- **Net Proceeds of the Fresh Issue & Pre-IPO:** ₹ 5,216.78 Mn (Gross Proceeds of ₹ 5,500 Mn less estimated issue expenses of ₹ 283.22 Mn)
- **Objects of the Issue:** Net Proceeds will be utilized towards Investment in the Subsidiary, KSPL for part financing the establishment of the Pandhurana Project and general corporate purposes.



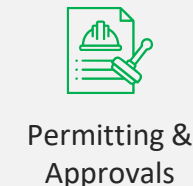
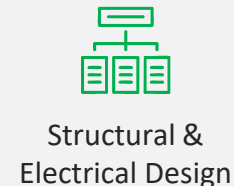
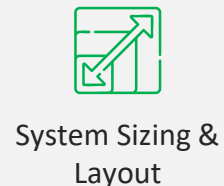
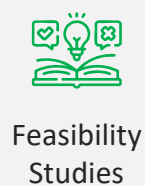
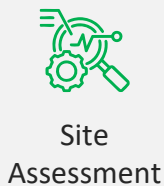
■ Promoter & Promoter Group
 ■ FII
 ■ DII
 ■ Other Public

IPO Subscription	
Category	Times Subscribed
QIB	74.24x
NII	68.21x
RII	51.69x
Total	68.49x

Solarworld Listing done at Valuation of ~ **₹ 30,422 Mn** based on Upper price band on 30th Sep 2025

Integrated EPC Framework

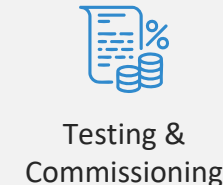
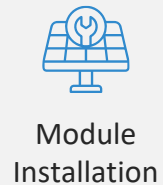
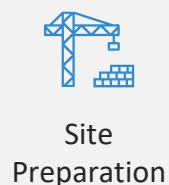
ENGINEERING & Design



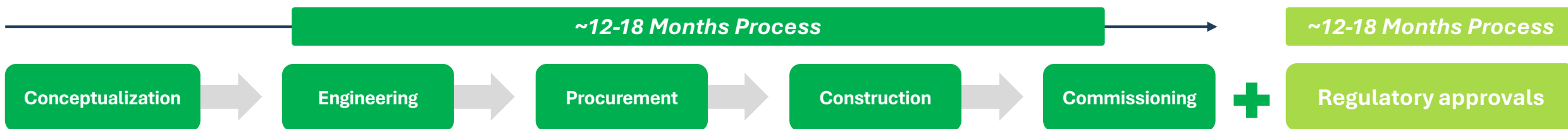
PROCUREMENT



CONSTRUCTION

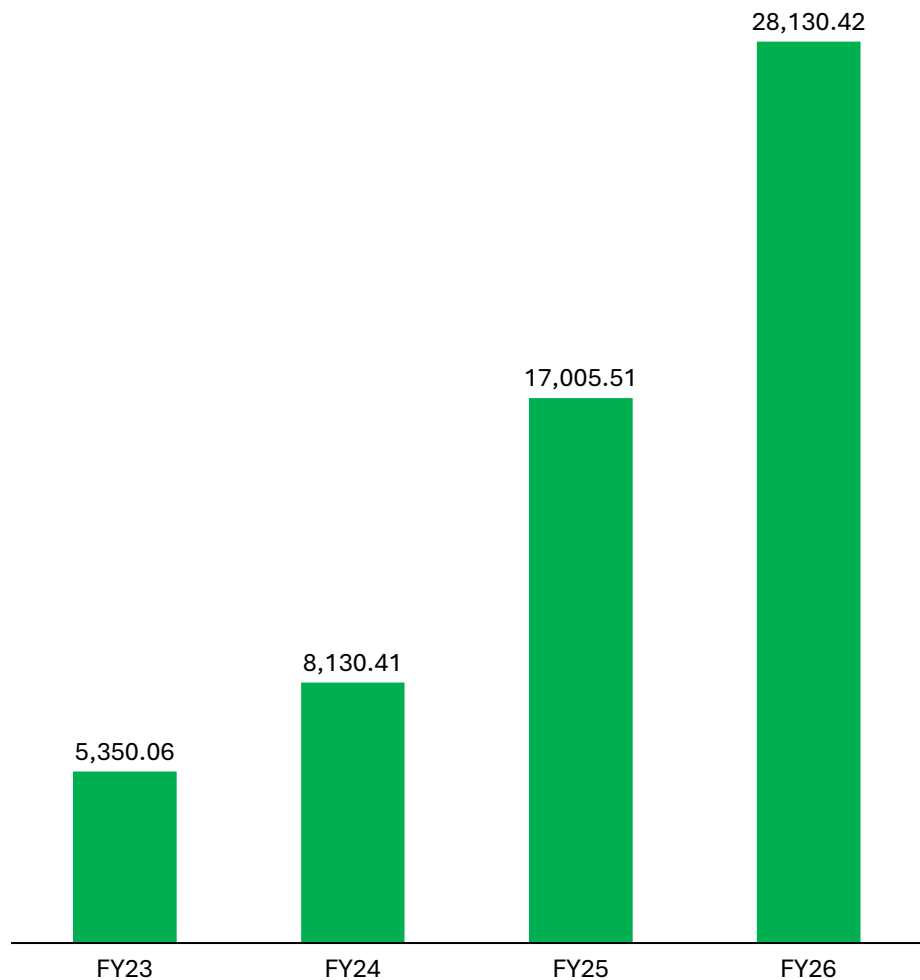


Development of Solar Projects is a Detailed and Extensive Process



Ongoing projects as on 31st March, 2026

Order Book (₹ Mn)



Name of Customer	State	Type of Project	O&M	Capacity (MW/AC)
NTPC Renewable Energy Limited	Rajasthan	Ground Mounted / CAPEX	Included	325 MW AC/ 376 MW DC
NTPC Renewable Energy Limited	Rajasthan	Ground Mounted / CAPEX	Included	250 MW AC/ 295 MW DC
NTPC Renewal Energy Limited	Rajasthan	Ground Mounted / CAPEX	Included	200MW AC/ 260 MW DC
Leading Renewable Energy Company	Gujarat	Ground Mounted / CAPEX	Included	200 MW AC/ 272 MW DC
SJVN Green Energy Limited*	Gujarat	Ground Mounted / CAPEX	Included	260 MW AC/ 370 MW DC
SJVN Green Energy Limited	Gujarat	Ground Mounted / CAPEX	Included	100 MW AC/ 142 MW DC
SJVN Green Energy Limited	Assam	Ground Mounted / CAPEX	Included	50 MW AC/ 68 MW DC
NTPC Limited	Madhya Pradesh	Ground Mounted / CAPEX	Included	20 MW AC/ 26 MW DC
Rajasthan Rajya Vidyut Utpadan Nigam Limited	Rajasthan	BESS	N.A	125 MW/ 250 MWh
Gujarat Urja Vikas Nigam Limited	Rajasthan	BESS	N.A	200 MW/ 400 MWh
NTPC Limited	Maharastra	BESS EPC	Included	132 MW/ 264 MWh
NTPC Limited	Maharastra	BESS EPC	Included	75 MW/ 150 MWh
NTPC Limited	Uttar Pradesh	BESS EPC	Included	50 MW/ 100 MWh

* It is currently under arbitration

Market Opportunity

EPC Market:

Valued at \$107.2 Billion (2025), projected \$287.8 Billion by 2035 Industry size in 2026 estimated at \$119.6 Billion

CAGR: 11.6% (2026–2035)

O&M Market

Growing from \$ 6.45 Billion (2025) to \$ 7.16 Billion in 2026.

CAGR: 11.1%

BESS Market (India)

\$ 154 Billion (2025) → \$2.0 Billion (2026) → \$8.59 Billion by 2031.

CAGR: 33.2% (2026–2031)

Solar PV Module (India)

Over \$81.4 Billion (2025), estimated to reach \$222.1 Billion by 2035. 2026 Industry size: \$91 Billion

CAGR: 11.8% (2026–2035)

Our Strengths

Integrated Platform

Proven Execution

Strong Order Book

Early BESS Mover

PSU Relationships

In-house Engineering & O&M

Growth Strategy

BESS Expansion:

Target a 60:40 BESS-to-Solar EPC revenue mix to capitalise on India's 33.2% CAGR storage opportunity.

Backward Integration:

Enhance captive module and cell consumption to improve margins and reduce supply-chain dependency.

Strategic Partnerships:

Build alliances for technology access, distribution reach and cost efficiency..

R&D Acceleration:

Invest in higher efficiency solar and storage technologies for innovation-led growth.

Customer Base Expansion:

Broaden reach across PSU and private sector segments to reduce client concentration risk.

Operational Scale-up:

Diversify across solar and energy storage to build a resilient, multi-revenue-stream business.

75 MW AC/ 99 MW DC Parasan Project (Completed Project)

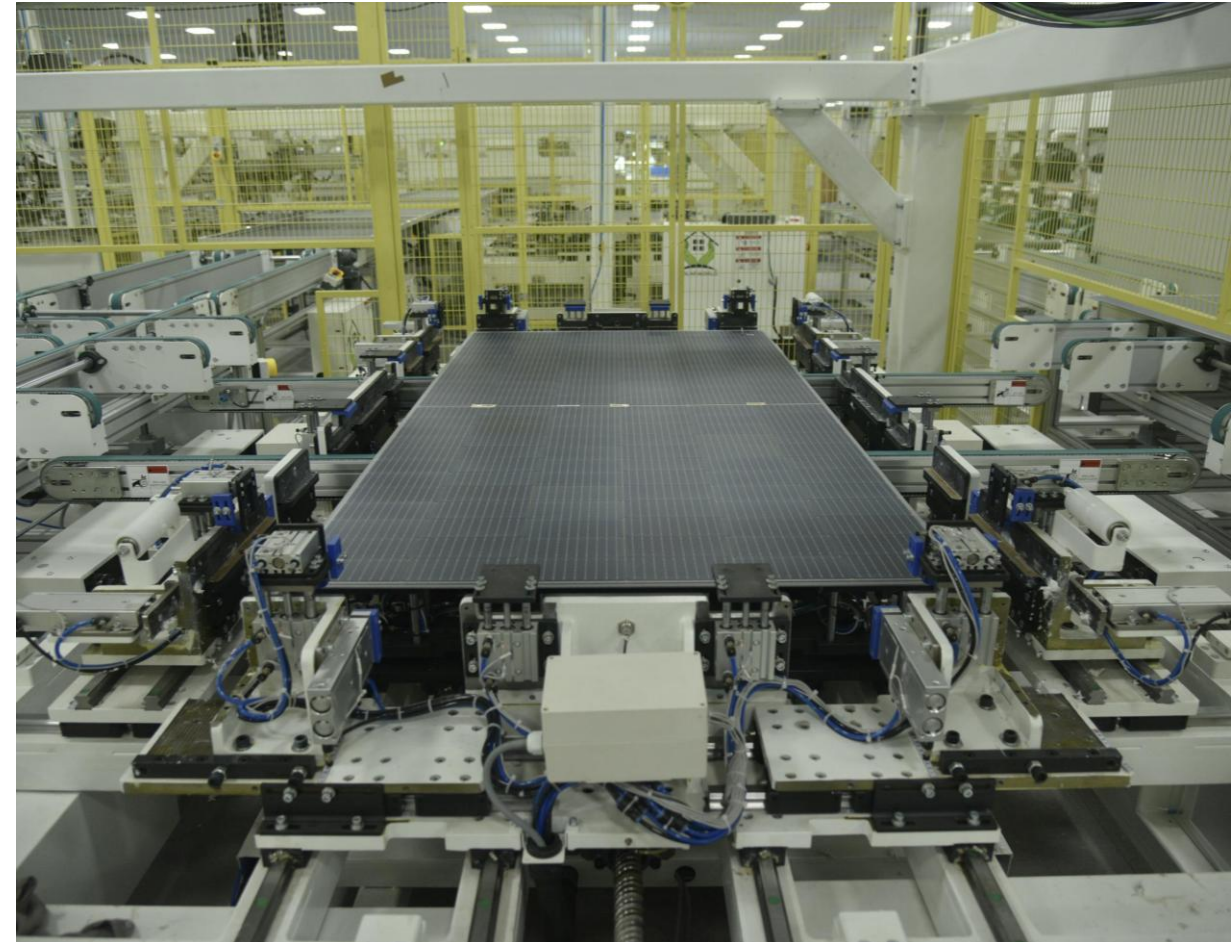
Switchyard



PV Module



Module Factory at Roorkee, Haridwar



Visionaries Driving the Business Forward...

The Promoters and Directors have Played a Significant Role in the Development and Growth of the Company...

Kartik Teltia | Managing Director



- Post-graduation programme in management from the Indian School of Business
- Bachelor's degree in commerce from the University of Delhi and Member of the Institute of Chartered Accountants of India
- Previously associated with Pioneer E-Services Private Limited for a period of over 2 years

Sushil Kumar Jain | Non-Executive Director



- Bachelor's degree in commerce from the University of Rajasthan
- Member of the Institute of Chartered Accountants of India
- Managing Partner of Sushil Jeetpuria and Company, and the proprietor of Pioneer Industries
- Over 34 years of experience in financial and taxation matters

Rishabh Jain | Non-Executive Director



- Bachelor's degree in commerce from the University of Delhi
- Member of the Institute of Chartered Accountants of India
- 11 years of association with Solarworld Energy Solutions Limited

Ramakant Pattanaik | Independent Director



- Master of Science in defence studies, Master of Philosophy in defence and strategic studies from the University of Madras
- Served in the Indian Navy for a period of 37 years and has retired as the vice-admiral of the Indian Navy
- Recipient of Param Vishisht Seva Medal & Ati Vishisht Seva Medal

Mangal Chand Teltia | Non-Executive Director



- Bachelor's degree in commerce from the University of Rajasthan
- Member of the Institute of Chartered Accountants of India
- Previously associated with Autometers Alliance Limited for a period of 30 years and retired as Director Commercial in 2020

Rini Chordia* | Chairperson and Independent Director



- Bachelor of Technology degree in civil engineering from the Indian Institute of Technology, Delhi
- Post-graduation programme in management from the Indian School of Business
- Head of finance of P2 Power Solutions Private Limited and a director of Belectric Mobility Private Limited

* Ms. Rini Chordia has resigned from the position of Chairperson and Independent Director, with effect from closure of business hours on May 26, 2026.

...with Strong Leadership and Governance...

Mr. Rajiv Gupta | Independent Director



- He brings over 35 years of extensive experience in the power and renewable energy sector, including leadership roles within the NTPC Group.
- He has served as CEO of NTPC Green Energy Limited and NTPC Renewable Energy Limited, driving strategic initiatives and expanding renewable energy capacity. He has held senior positions such as Chief General Manager and General Manager at NTPC Limited.

Ms. Ritu Hastir | Independent Director



- She holds an MBA in Marketing & Human Resources from the Indian Institute of Planning & Management, New Delhi, and a BBA degree from Jagannath Institute of Management Studies, New Delhi. She possesses professional experience in the logistics and shipping industry, having been associated with India Infrastructure & Logistics Private Limited and Arshiya Limited in various capacities.

Mr. Subhash Kumar Changoiwala | Independent Director



- He is a qualified Chartered Accountant with over 42 years of experience in Accounts, Finance & Taxation. He possesses expertise in financial management, corporate governance, regulatory compliance and strategic planning.

Mr. Upendra Goyal | Independent Director




- He is a finance and corporate governance professional with over four decades of industry exposure. He is a member of both the ICAI and ICSI, and served as Executive Director (Finance) at ONGC Limited. He holds a Bachelor's degree in Commerce from Punjab University in Economics and has undergone an Advanced Management Programme from IIM Lucknow.


... supported by Experience Professionals Steering Execution

Supported by Key Managerial Personnels


Mukut Goyal | Chief Financial Officer

- 
- Associated with Rama Paper Mills Limited, Tokai Imperial Hydraulics India Private Limited, Jamna Auto Industries Limited, Jindal Poly Films Limited, Samvardhana Motherson International Limited, MB Power (Madhya Pradesh) Limited and Dalmia Cement (Bharat) Limited. 12+ years working in the field of accountancy and finance

Varsha Bharti | Company Secretary & Compliance Officer

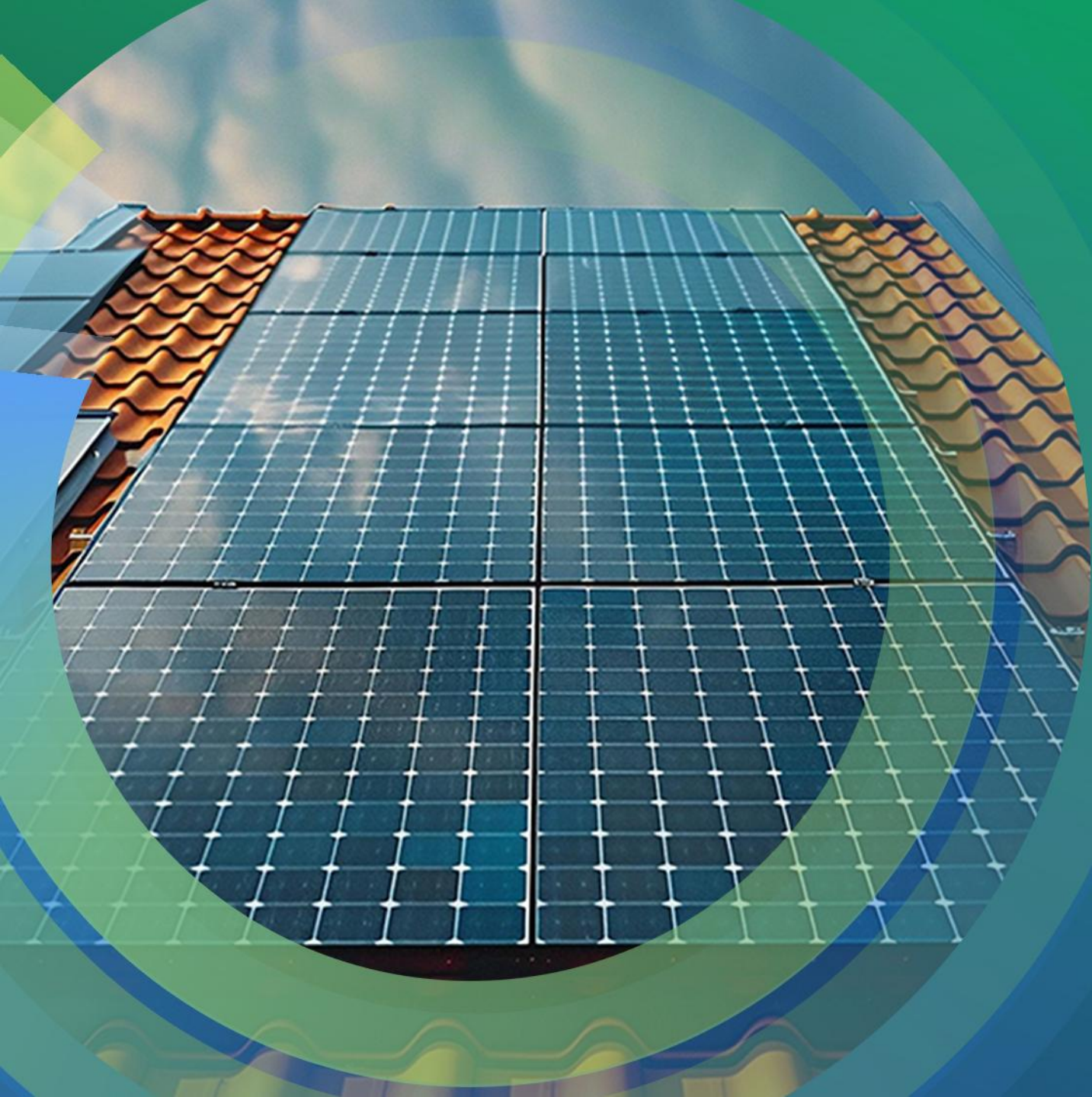
- 
- Previously associated with The Lalit, India Finsec Limited
 - 10+ years in the field of secretarial and listing compliances
 - Bachelor's degree in commerce (honours course) from the University of Delhi and is a member of the Institute of Company Secretaries of India

Peeyush Salwan | President

- 
- Post graduate in management from Birla Institute of Management Technology and executive certificate programme in strategy and leadership for senior professionals from Indian Institute of Management Indore
 - Previously associated with Su-Kam Power Systems Limited, Novateur Electrical & Digital Systems Private Limited, Jackson Limited and Danton Power Private Limited

Ashutosh Mishra | Chief Operating Officer

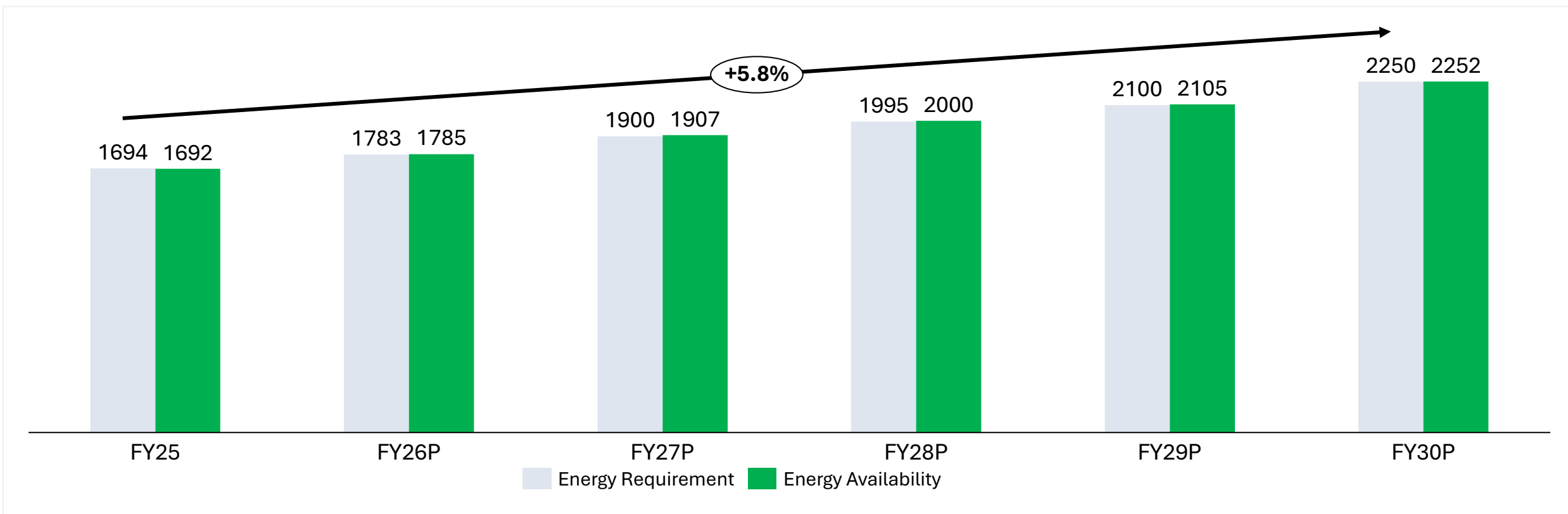
- 
- Bachelor of Technology degree in electrical engineering from the Uttar Pradesh Technical University.
 - Associated with Jakson Limited, Gedpec Infratech Limited, Skipper Electricals (India) Limited, Western Control and Automation, PME Power Solutions (India) Limited and Karytron Electrical Industries
 - 9+ Years of Experience



Industry Landscape

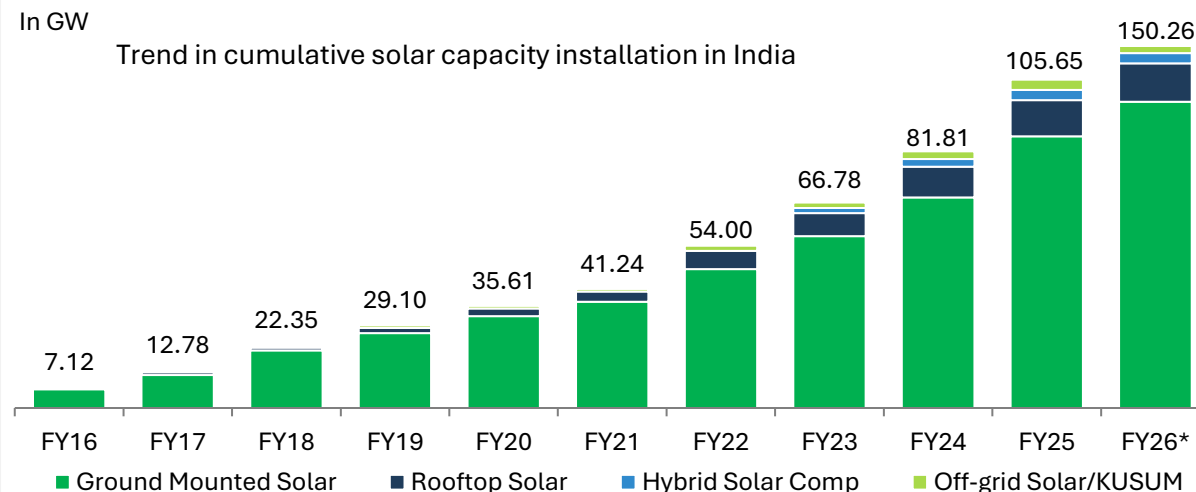
India's Energy Demand Outlook

Power demand is expected to grow by 5.5-6.0% in the next five years which will be supported by infrastructure-linked capex, strong economic fundamentals along with expansion of the power footprint via strengthening of transmission and distribution infrastructure

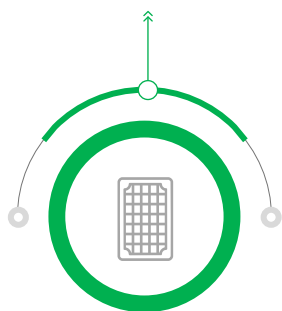


Accelerating Towards 280 GW Solar by 2030

- Solar energy installed capacity has increased 53.28 times since 2014 - increased from 2.82 GW in March 2014 to 150.26 GW in March 2026, i.e. an increase of 147.44 GW, driven by rapid industrialization, urbanization, and the electrification of transport and infrastructure.
- Solar has emerged as the dominant source (~55% share as of March 2026), with capacity rising from 119.02 GW in July 2025 to 150.26 GW by March 2026—on track toward the nation’s 280 GW solar target (as part of 500 GW non-fossil capacity by 2030) and its carbon neutrality goal by 2070

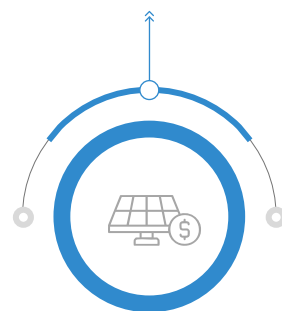


Growth Drivers for Solar Sector in India



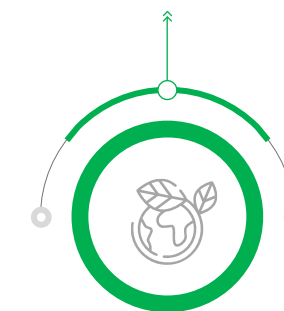
Decline in Solar PV Module Prices

Fiscal, Regulatory and Infrastructure Support from Government



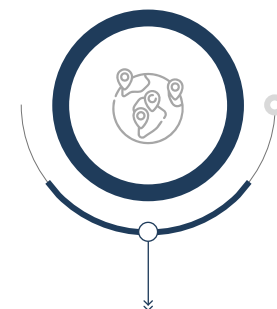
Improving Availability of Financing at Low Cost

Favorable Technology



Green Hydrogen and Green Ammonia Push

Foray of Large Establishes global Players



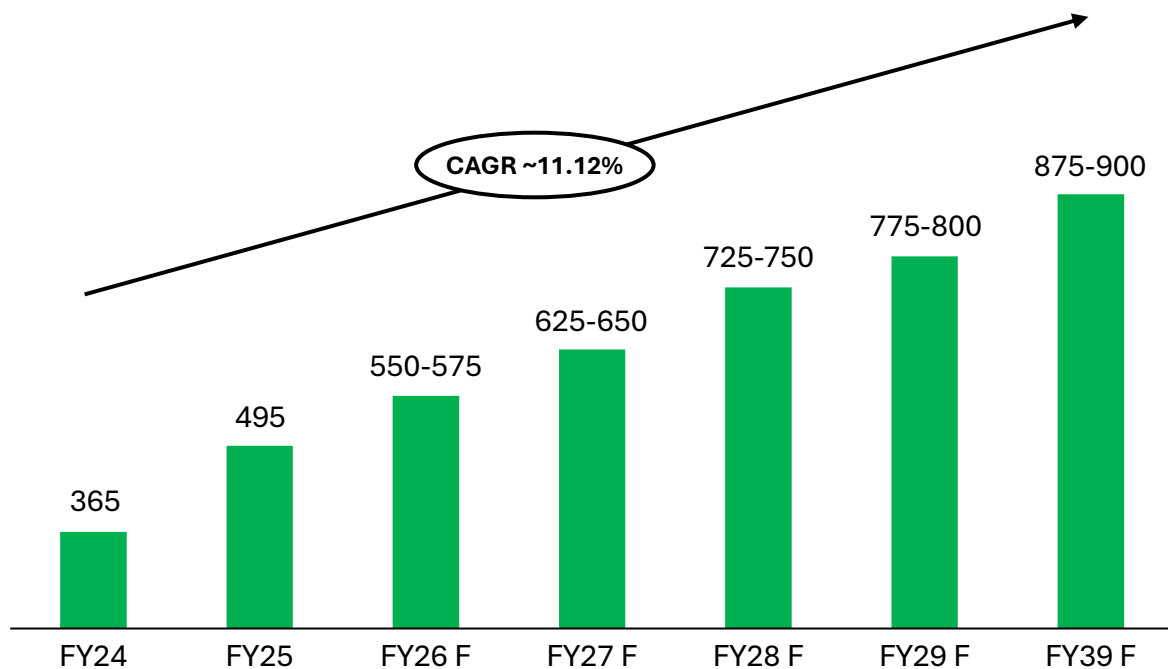
Export Segment opening for Indian Players

Growing Opportunities in Solar Energy Solutions

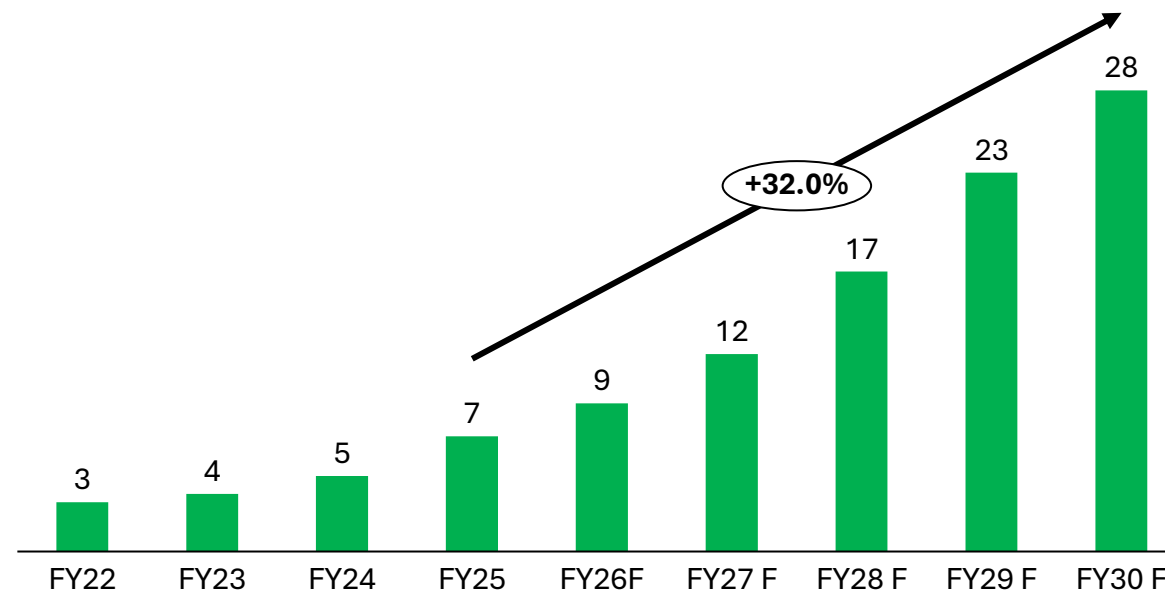
Surge in solar power capacity reached 170-180 GW from fiscal years 2026 to 2030, significantly surpassing the ~85 GW added between fiscal years 2019 and 2025. This growth is primarily spurred by robust government backing, demonstrated through an aggressive tendering strategy **EPC services for Solar energy are dominated by third-party service providers in the country (~40-45%).**

The O&M market in India for solar power is expanding in the tandem with the country's installed capacity which has reached ~ 119 GW as of 31st July 2025. Out of the total O&M market ~ 45% is the share of third-party O&M, therefore ~ 50-55 GW is total addressable market for this business. This has spurred demand for the comprehensive O&M services.

Third Party Solar EPC Market India (₹ Billion)



The demand for third party O&M services is expected to be in the range of ₹ 27-28 billion by fiscal 2030



Source: RHP, Company

Government Initiatives Driving Solar Expansion in India

India's total installed solar capacity reached 150.26 GW as of March 2026, comprising 114.87 GW from ground-mounted plants, 25.73 GW from grid-connected rooftop systems, 3.86 GW from hybrid projects, and 5.80 GW from off-grid solar installations. This reflects the country's integrated and multi-faceted approach to accelerating renewable energy growth.

Solar Parks



The Government is facilitating the establishment of Solar Parks and Ultra-Mega Solar Power Projects with a combined target of 40,000 MW capacity. These parks are designed to provide developers with ready infrastructure, enabling faster project execution and optimized power evacuation.

PLI Schemes



Under the Production Linked Incentive (PLI) Scheme, the Government is promoting domestic manufacturing of solar PV modules, targeting 48 GW integrated capacity with investments of ₹52,900+ crore. The scheme supports localization, reduces import dependence, and incentivizes incremental production.

Rooftop

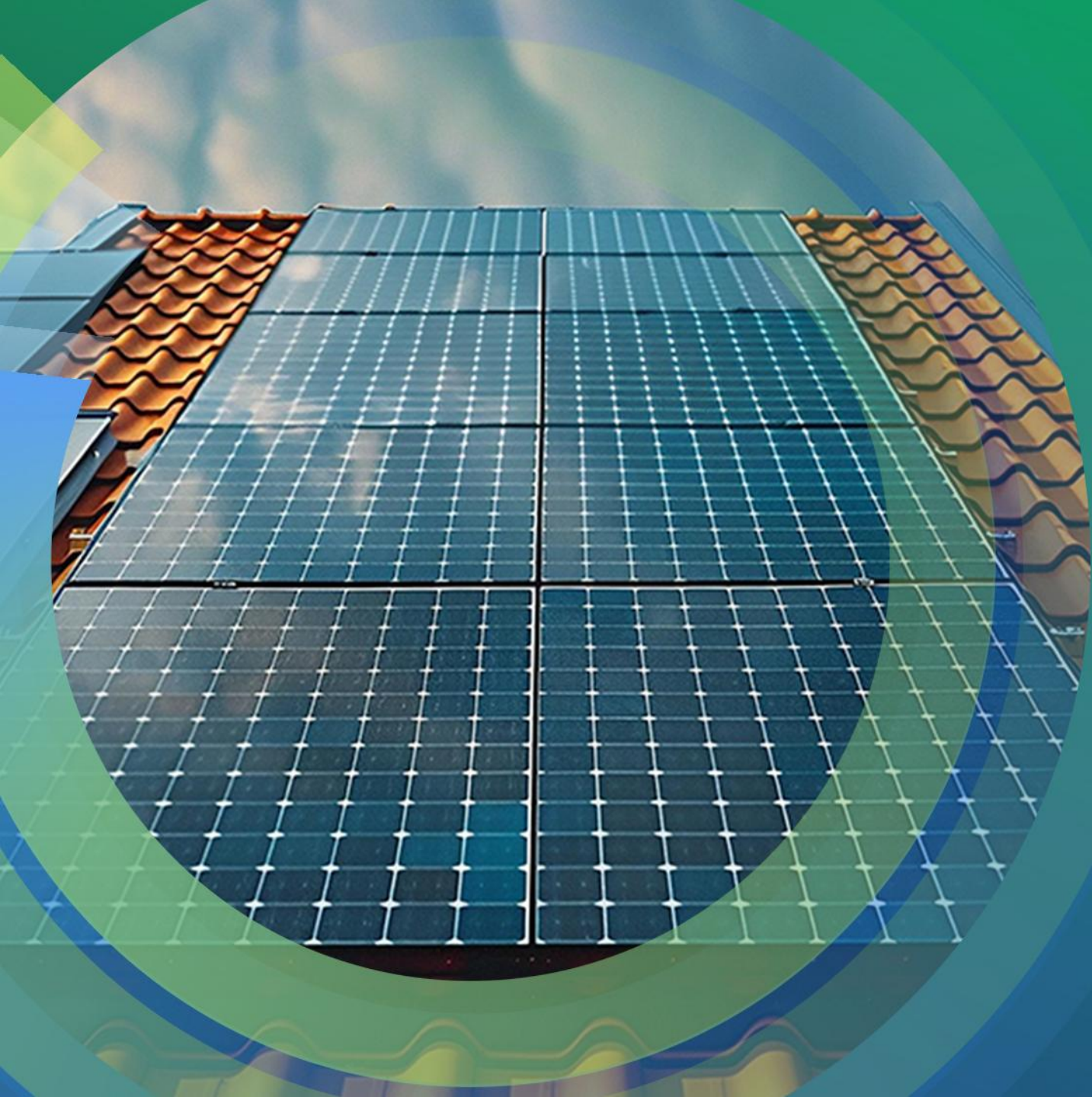


The PM Surya Ghar: Muft Bijli Yojana aims to equip 1 crore households with rooftop solar systems through a proposed outlay of ₹75,000 crore. City accelerator program has been initiated in 41 cities to accelerate RTS in cities. The initiative has already supported the installation of nearly 20 lakh systems by September 2025, with a national target of adding 30 GW of residential rooftop capacity by 2027.

Battery Storage



Through the VGF Scheme under the Power System Development Fund (PSDF), the Government plans to develop 30 GWh of Battery Energy Storage Systems (BESS). The program includes a Viability Gap Funding (VGF) provision of up to ₹18 lakh per MW-hour and a total budgetary allocation of ₹5,400 crore, ensuring greater grid stability and renewable integration.

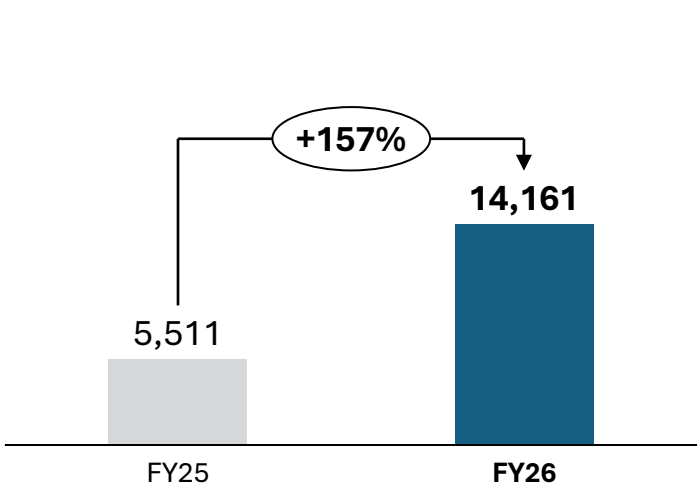
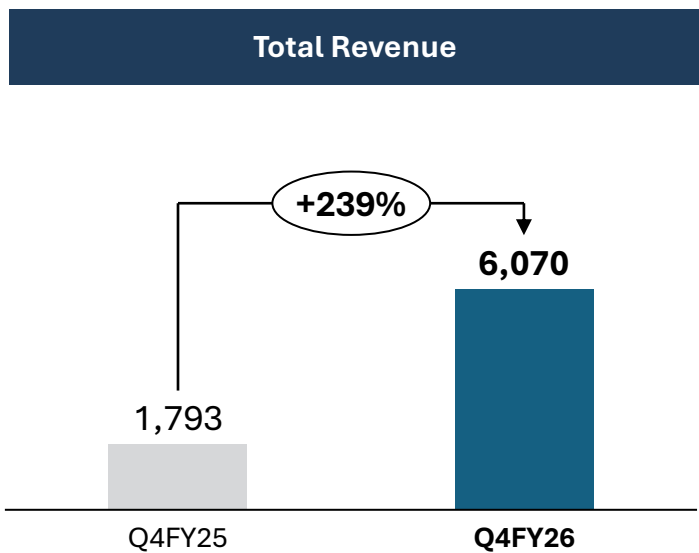


Q4 & FY26 Results Update

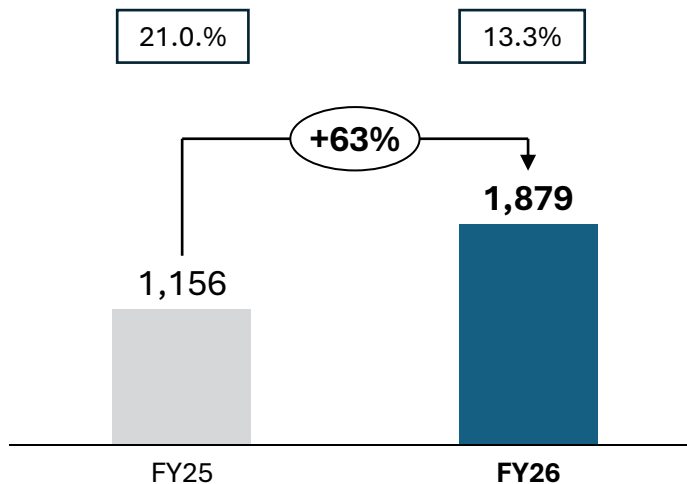
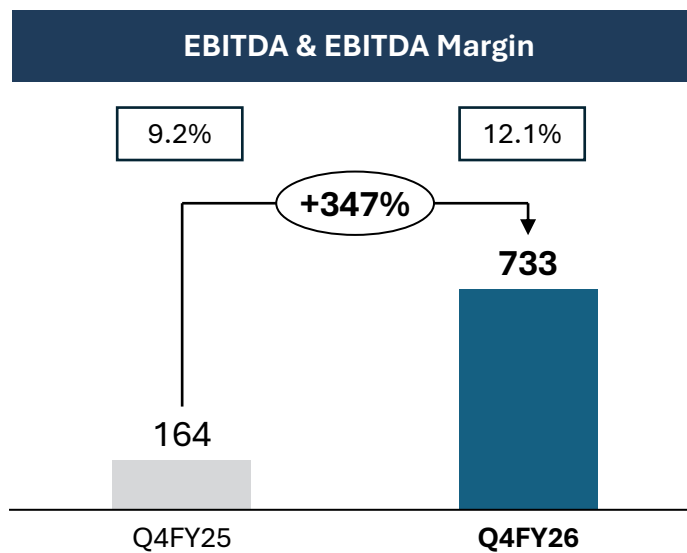
Q4 & FY26 Performance (Consolidated)

₹ Mn

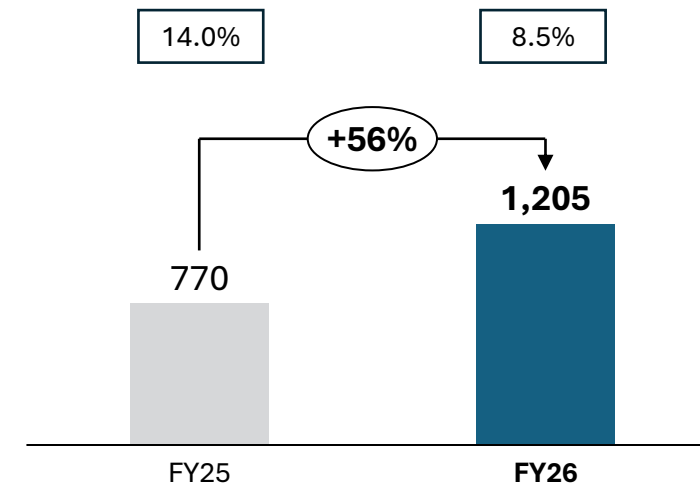
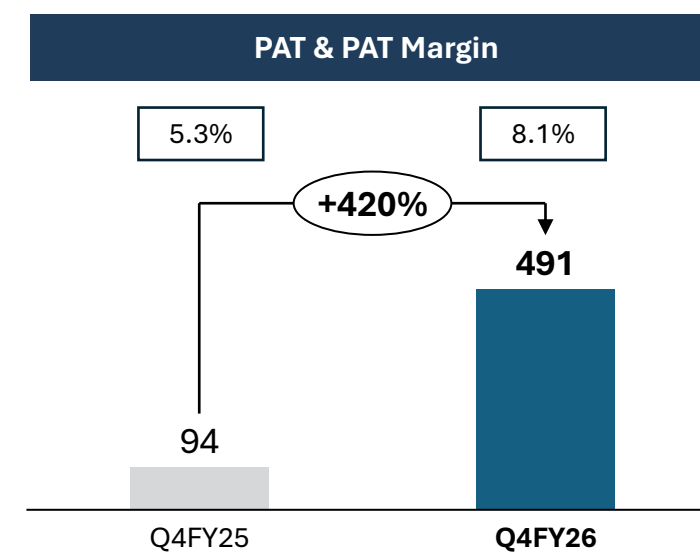
Total Revenue



EBITDA & EBITDA Margin



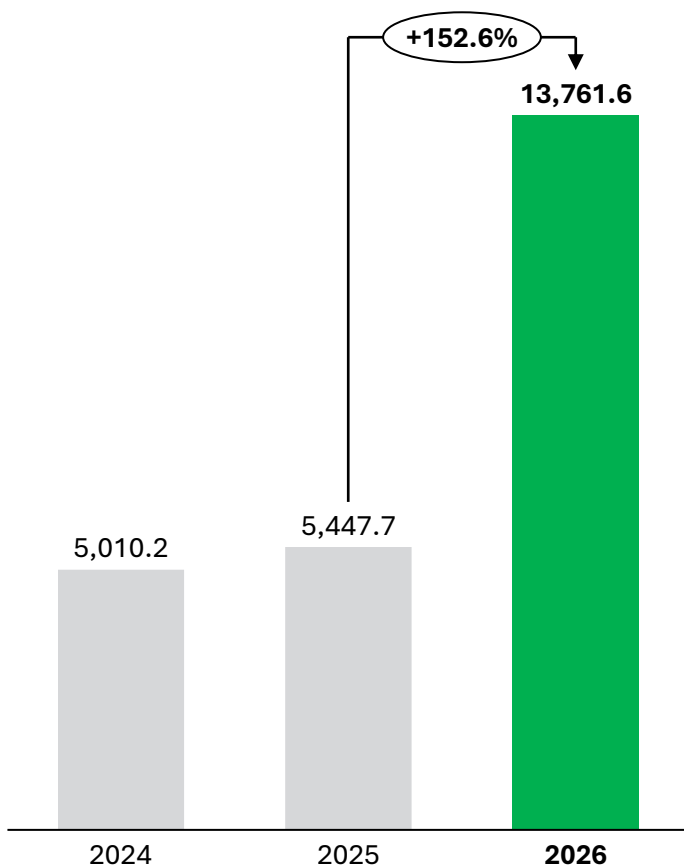
PAT & PAT Margin



Consistent Growth Across Revenue and Profitability

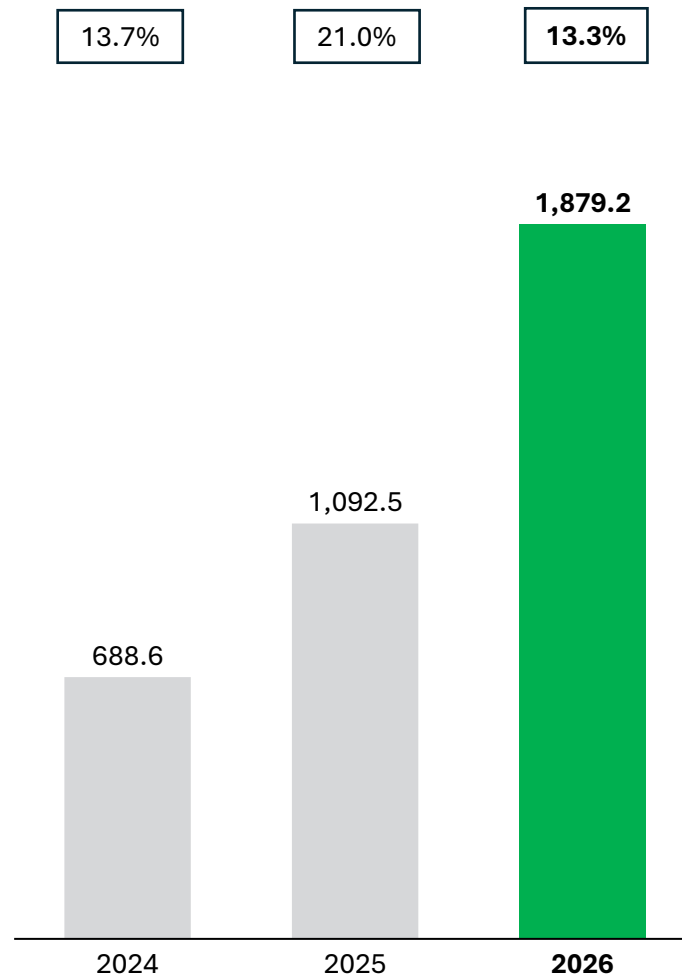
Revenue from Operations

₹ Mn



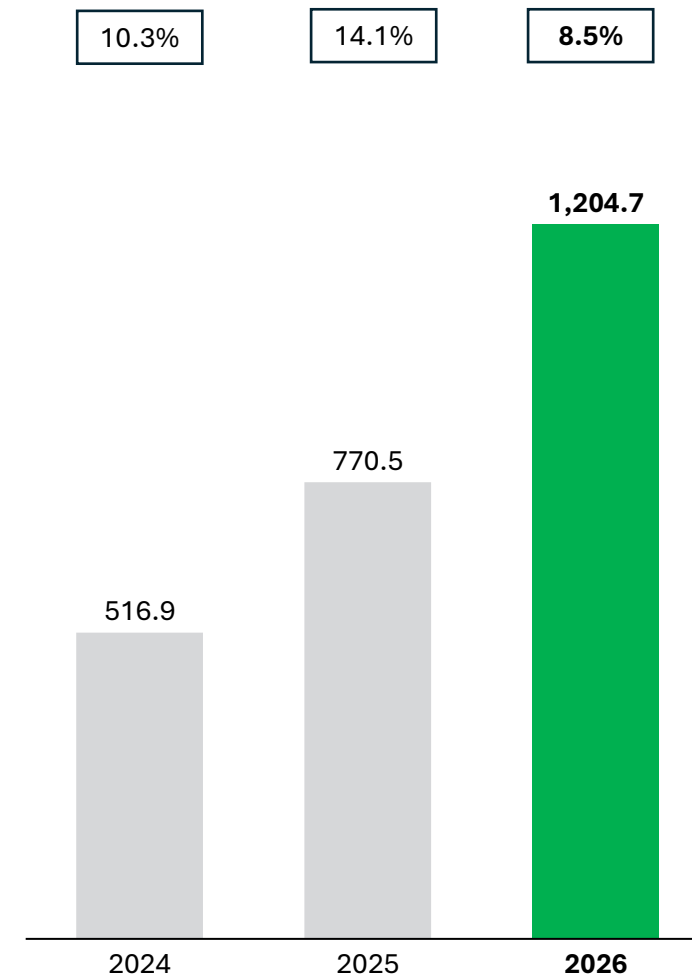
EBITDA & EBITDA Margin

₹ Mn



PAT & PAT Margin

₹ Mn



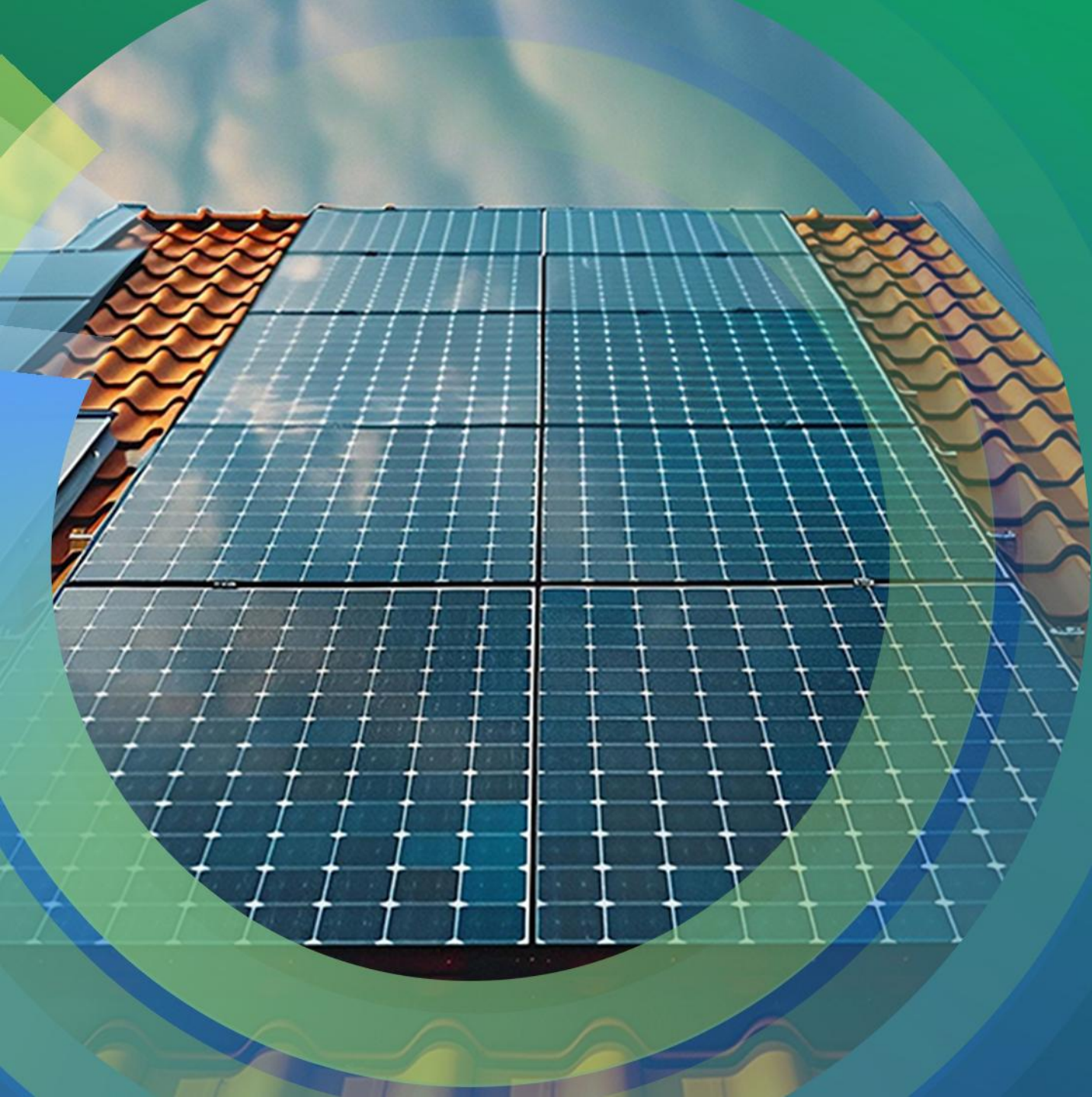
Q4 & FY26 Financial Highlights (Consolidated)

Particulars (₹ Mn)	Q4 FY26	Q4 FY25	Y-o-Y	Q3 FY26	Q-o-Q	FY26	FY25	Y-o-Y
Revenue from Operations	5918.12	1,764.07		5,782.29		13761.56	5,447.65	
Other Income	151.41	28.54		96.17		399.10	63.20	
Total Revenue	6069.53	1,792.61	239%	5,878.46	3%	14160.66	5,510.85	157%
Cost of Material Consumed	5103.05	905.01		4767.32		11179.23	2,824.23	
Change in Inventories of Finished goods & Work in Progress	-519.65	-		-103.74		-642.93	0.00	
Engineering, procurement and construction project expenses	577.84	228.97		303.94		960.88	534.87	
Purchase of stock in trade	7.84	252.79		13.29		318.69	600.32	
Total Raw Material	5169.08	1,386.77		4,980.81		11815.87	3,959.42	
Gross Profit	900.45	405.84	122%	897.65	0%	2344.79	1,551.43	51%
Gross Profit Margin (%)	14.8%	22.6%		15.3%		16.6%	28.2%	
Employee Expenses	84.20	36.24		69.22		238.72	110.43	
Other Expenses	83.42	205.51		74.20		226.81	285.33	
EBITDA	732.83	164.09	347%	754.23	-3%	1879.27	1,155.67	63%
EBITDA Margin (%)	12.1%	9.2%		12.8%		13.3%	21.0%	
Depreciation	18.47	0.72		17.92		52.41	2.27	
EBIT	714.36	163.37	337%	736.31	-3%	1826.86	1,153.40	58%
EBIT Margin (%)	12%	9%		13%		13%	21%	
Finance Cost	71.69	20.20		63.72		206.53	62.32	
Share of Profit of Joint Ventures (Net of Tax)	4.95	-5.32		-11.04		-9.81	-3.85	
Loss on sale of Joint ventures							-21.15	
Profit before Tax	647.63	137.85	370%	661.55	-2%	1610.51	1,066.08	51%
Profit before Tax(%)	11%	8%		11%		11%	19%	
Tax	157.08	43.47		169.36		405.77	295.60	
Profit After Tax	490.55	94.38	420%	492.19	0%	1204.74	770.48	56%
PAT Margin (%)	8.1%	5%		8%		8.5%	14%	
EPS (As per Profit after Tax)	5.66	1.27		5.68		14.95	10.68	

FY26 Balance Sheet (Consolidated)

Particulars (₹ Mn)	Mar-26	Mar-25
ASSETS		
Non - Current Assets		
Property, plant and equipment	1,447.61	373.81
Capital work-in-progress	425.28	881.17
Goodwill on Amalgamation	0.24	0.24
Financial Assets		
(i) Investments	63.76	73.07
(ii) Other Financial Assets	214.39	92.35
Deferred Tax Assets	59.91	48.54
Non current tax assets (net)	12.46	0.00
Other non-current assets	88.10	161.04
Total Non - Current Assets	2,311.75	1,630.22
Current Assets		
Inventories	1,061.27	20.43
Financial Assets		
(i) Trade receivables	3,477.06	1,442.52
(ii) Cash and cash equivalents	229.12	110.87
(iii) Bank balances other than (iii) above	5,490.60	1,160.33
(iv) Loans	163.86	215.21
(v) Other current financial assets	3,084.04	869.45
Other current assets	1,062.33	531.12
Total Current Assets	14,568.28	4,349.93
TOTAL ASSETS	16,880.03	5,980.15

Particulars (₹ Mn)	Mar-26	Mar-25
Equity		
(a) Equity share capital	433.36	370.69
(b) Other equity	8,044.61	2,719.97
Equity attributable to equity holders of the parent	8,477.97	3,090.66
Non-controlling interests		
Total Equity	8,477.97	3,090.66
Liabilities		
Non - Current Liabilities		
(i) Borrowings	647.80	643.93
Provisions	13.36	8.17
Total Non - Current Liabilities	661.16	652.10
Current Liabilities		
Financial liabilities		
(i) Borrowings	1,906.79	501.61
(ii) Trade payables		
(a) total outstanding dues of micro enterprises and small enterprises	427.70	36.51
(b) total outstanding dues of creditors other than micro enterprises and small enterprises	4,024.62	588.50
(iv) Other financial liabilities	137.30	116.67
Other Current Liabilities	1,240.71	953.65
Provisions	3.79	22.31
Income tax liabilities (net)	0.00	18.14
Total Current Liabilities	7,740.90	2,237.39
Total Equity and Liabilities	16,880.03	5,980.15



Historical Financial Performance

Historical Profit and Loss Statement

Profit & Loss statement (₹ Mn)	FY25	FY24	FY23
Revenue from Operations	5,447.7	5,010.2	2,324.60
Cost of Material Consumed	2,824.2	3,813.1	1,817.50
Engineering, procurement and construction project expenses	534.9	436.3	252.6
Purchase of Stock in trade	600.3	3.1	3.4
Total Raw Material & Manufacturing Cost	3,959.4	4,252.5	2,073.40
Gross Profit	1,488.2	757.6	251.2
Gross Margin %	27.3%	15.1%	10.80%
Employee Cost	110.4	8.7	5
Other Expenses	285.3	60.4	31.5
EBITDA	1,092.5	688.6	214.7
EBITDA %	20.1%	13.7%	9.20%
Depreciation	2.3	4.3	2.3
Other Income	63.2	44.9	25.9
EBIT	1,153.4	729.2	238.3
EBIT Margin (%)	21.2%	14.6%	10.30%
Finance cost	62.3	67.8	59.1
Share of Profit of Joint Ventures (Net of Tax)	-3.9	22.3	14.1
Loss on sale in JV	-21.2		
PBT	1,066.1	683.7	193.3
PBT Margin %	19.6%	13.6%	8.30%
Tax	295.6	166.8	44.9
PAT	770.5	516.9	148.4
PAT Margin %	14.1%	10.3%	6.40%
EPS (Rs)	10.7	8.0	2.3

Historical Balance Sheet

Particulars (₹ Mn)	FY25	FY24	FY23
ASSETS			
Non - Current Assets			
Property, plant and equipment	373.8	9.3	11.8
Capital work-in-progress	881.2		
Goodwill	0.2	6.0	
Financial Assets			
(i) Investments	73.1	88.1	68.3
(ii) Loan			
(iii) Other Financial Assets	92.4	0.1	2.1
Deferred Tax Asset	48.5	10.2	4.7
Other non-current assets	161.0		3.7
Total Non - Current Assets	1,630.2	113.6	90.5
Current Assets			
Inventories	20.4	22.5	15.2
Financial Assets			
(i) Investments		0.2	0.2
(ii) Trade receivables	1,442.5	302.0	205.2
(iii) Cash and cash equivalents	110.9	203.8	43.3
(iv) Bank balances other than (iii) above	1,160.3	201.2	131.8
(v) Loans	215.2	1.4	253.7
(vi) Other current financial assets	869.5	613.7	305
Other current assets	531.1	91.7	159.4
Total Current Assets	4,349.9	1,436.6	1,113.70
TOTAL ASSETS	5,980.2	1,550.2	1,204.30

Particulars (₹ Mn)	FY25	FY24	FY23
Equity			
(a) Equity share capital	370.7	3.2	3.2
(b) Other equity	2,720.0	732.8	215.9
Equity attributable to equity holders of the parent	3,090.7	736.0	219.1
Non-controlling interests			
Total Equity	3,090.7	736.0	219.1
Liabilities			
Non - Current Liabilities			
(i) Borrowings	643.9	160.5	170.5
Provisions	8.2	0.9	0.6
Total Non - Current Liabilities	652.1	161.4	171.1
Current Liabilities			
Financial liabilities			
(i) Borrowings	501.6	450.6	476.2
(a) total outstanding dues of micro enterprises and small enterprises	36.5	8.6	1.8
(b) total outstanding dues of creditors other than micro enterprises and small enterprises	588.5	113.5	111.2
(iv) Other financial liabilities	116.7	16.3	0.1
Provisions	22.3	0.0	13.5
Income tax liabilities (net)	18.1	38.9	
Total Current Liabilities	2,237.4	652.9	814.1
Total Equity and Liabilities	5,980.2	1,550.2	1,204.30



COMPANY :



Solarworld Energy Solutions Limited

CIN: L15100DL2013PLC255455

Mr. Mukut Goyal

E-mail: mukut@worldsolar.in

Website: www.worldsolar.in

INVESTOR RELATIONS ADVISORS :



MUFG Intime India Private Limited

A part of MUFG Corporate Markets, a division of MUFG Pension & Market Services

Mr. Nikunj Seth

nikunj.seth@in.mpms.mufg.com

Ms. Sejal Bhattar

sejal.bhattar@in.mpms.mufg.com

Meeting Request

[Link](#)



Thank You